



Heavy Duty P-6036 Sub Sea Data Logging Load Shackle

Euroload Limited provide a range of Heavy Duty Sub Sea data logging load monitoring shackles. Manufactured from Van Beest P-6036 heavy duty bow as standard. Stainless steel or steel load pins available



We use a high quality datalogger mounted within the load pin. Before sending the shackle sub sea you can set all the logging parameters. 1,000,000 data samples are available as standard. Pre-set start time, stop time, sample rate, alarms and many more. At Euroload we calibrate every load shackle in its bow in tension. We never calibrate load shackle pins on V Blocks in compression. The accuracy is unacceptable calibrated on V blocks.

Euroload load shackles have incredible accuracy and repeatability through years of R and D.

These heavy duty load shackles have been designed to cope with any environment with ease. The first application we used this shackles on was to tow a subsea plough at the tow head.

The standard range cover 120 tonne to 2000 tonne. Special's are available on request. These load shackles are utilised in varies industries including, Oil and Gas, Manufacturing, renewables, Fishing, Transportation, Marine.

Anywhere a reliable tensile remote load reading is required.



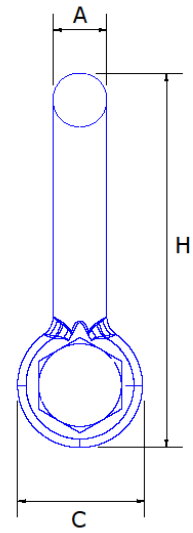
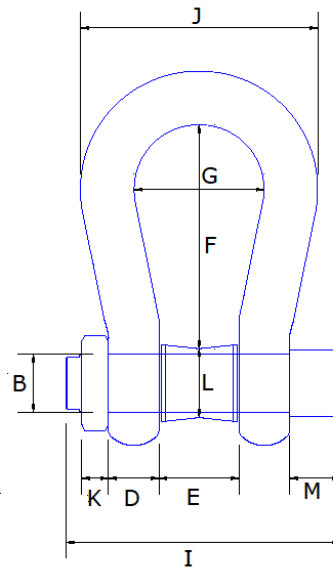
Features:

- . 1,000,000 samples available
- . 5 year battery life
- . Free datalogging software
- . High Grade steel or stainless steel load pins
- . Compact size and low headroom.
- . Exceptional heavy duty stainless steel end cap
- . Multiple start stop options
- . 3,000 meter depth rating
- . Unique screw off access compartment for logger
- . Selectable units of measurement
- . Exceptionally heavy duty
- . 2 year manufacturer warranty
- . Massive stock held in factory
- . Worldwide agent network with stock held



Heavy Duty P-6036 Sub Sea Data Logging Load Shackle

- The Euroload Sub-sea remote datalogging shackles are a battery-powered, stand-alone data loggers that measure and record load values from strain gauged load cells. This compact, unit is perfect for monitoring stress in remote locations. The datalogger offers a multiple start/stop function, ultrahigh speed download capability, 1 million reading storage capacity, optional memory wrap, battery life indicator, optional password protection, programmable alarms and more. Data retrieval is simple. Plug the supplied cable into the subsea connector and the easy to use Windows software does the rest. The software converts your PC into a real time strip chart recorder. Using the Windows® software, starting, stopping and downloading from the datalogger is simple and easy. Graphical, tabular and summary data is provided for analysis and data can be viewed in tonnage. The data can also be automatically exported to Excel® for further calculations. The storage medium is non-volatile solid state memory, providing maximum data security even if the battery becomes discharged. Its small size allows it to fit almost anywhere.
- The datalogger was designed with our customers in mind. There are free firmware upgrades for the life of the product so that data loggers already deployed in the field can grow with new technological developments. Units do not need to be returned to the factory for upgrades. The user can do this automatically from any PC.
- Data Logger Specifications:
- Reading Rate: 4 Hz to 1 every 24 hours.
- Memory: 1,000,000 readings; software configurable memory wrap 333,000 readings in multiple start/stop mode.
- Memory Wrap around: Yes.
- Start Modes: Immediate start, delay start up to 24 months, multiple pushbutton start/stop
- Stop Modes: Manual through software timed (specific date and time)
- Multiple Start/Stop Mode: Start and stop the device multiple times without having to download data or communicate with a PC
- Multiple Start/Stop Mode activation: to Start the Device: Press and hold the pushbutton for five seconds, the green LED will flash during this time. The device has started logging.
- To Stop the Device: Press and hold the pushbutton for five seconds, the red LED will flash during this time. The device has stopped logging
- Real time Recording: The device may be used with PC to monitor and record data in real-time
- Battery Life: 5 years typical, at a 1 minute rate with 1000 ohm load.
- Software: XP SP3/Vista/7 and 8 (32- and 64-bit)



Shackle Dimension`s Van Beest P-6036 Heavy Duty Bow Shackle BN

Shackle Size WLL	a	b	c	d	e	f	g	h	i	j	k	l	m	Weight KG	
120		95	95	208	91	147	359	238	647	440	428	50	180	120	130
150		105	108	238	102	169	380	275	688	490	485	60	190	120	170
200		120	130	279	113	179	479	290	838	520	530	60	200	120	255
250		130	140	299	118	205	510	305	904	560	565	65	210	120	320
300		140	150	325	123	205	576	305	996	575	585	70	236	120	406
400		170	175	376	164	231	613	325	1114	690	665	70	272	120	640
500		180	185	398	164	256	658	350	1190	720	710	70	310	120	755
600		200	205	444	189	282	644	375	1243	810	775	70	360	120	1000
700		210	215	454	204	308	630	400	1263	870	820	70	380	120	1050
800		210	220	464	204	308	620	400	1270	870	820	70	380	120	1170
900		220	230	485	215	328	620	420	1296	920	860	70	390	120	1340
1000		240	240	515	215	349	630	420	1336	940	900	70	400	120	1520
1250		260	270	585	230	369	668	450	1456	1025	970	70	410	120	2070
1500		280	290	625	230	369	718	450	1556	1025	1010	70	420	120	2500
2000		TBC													
Material	Bow and Pin alloy steel, grade 8, quenched and tempered														
Safety Factor	MBL equals 5 x WLL														

Specification`s

	Size WLL	120	150	200	250	300	400	500	600	700	800	900	1000	1250	1500	
Units	1	Tonnes as standard. Selectable at order.														
Resolution	1	0.01						0.1								
Battery Type	1 off Litium AAA. 5 years typical at a 1 minute update rate.															
Accuracy	`+/- 1% of FS															
Operating temp	`-10 deg C to +60 deg C															
Enviromental rating	Sub Sea 3,000 Meters water depth															
Note: Any units of measuement can be specified at time of order.																
Certification package supplied with each link contains: Calibration Certificate to BS 8422:2003, Declaration of Incorporation, EU Declaration of Conformity, Declaration of Manufacture, EC Declaration of Incorporation, CE- Aproval Statements, Checklist and user instructions. Material Certificates 2.1, 2.2, 3.1.																



Heavy Duty P-6036 Sub Sea Data Logging Load Shackle

Local Agent:

Euroload Limited, Unit 9, Airside Business Park, Dyce Drive, Kirkhill Ind Est, Dyce, Aberdeen, AB21 0GT.
Tel: +44 (0) 1224 774115 e-mail info@euroload.eu